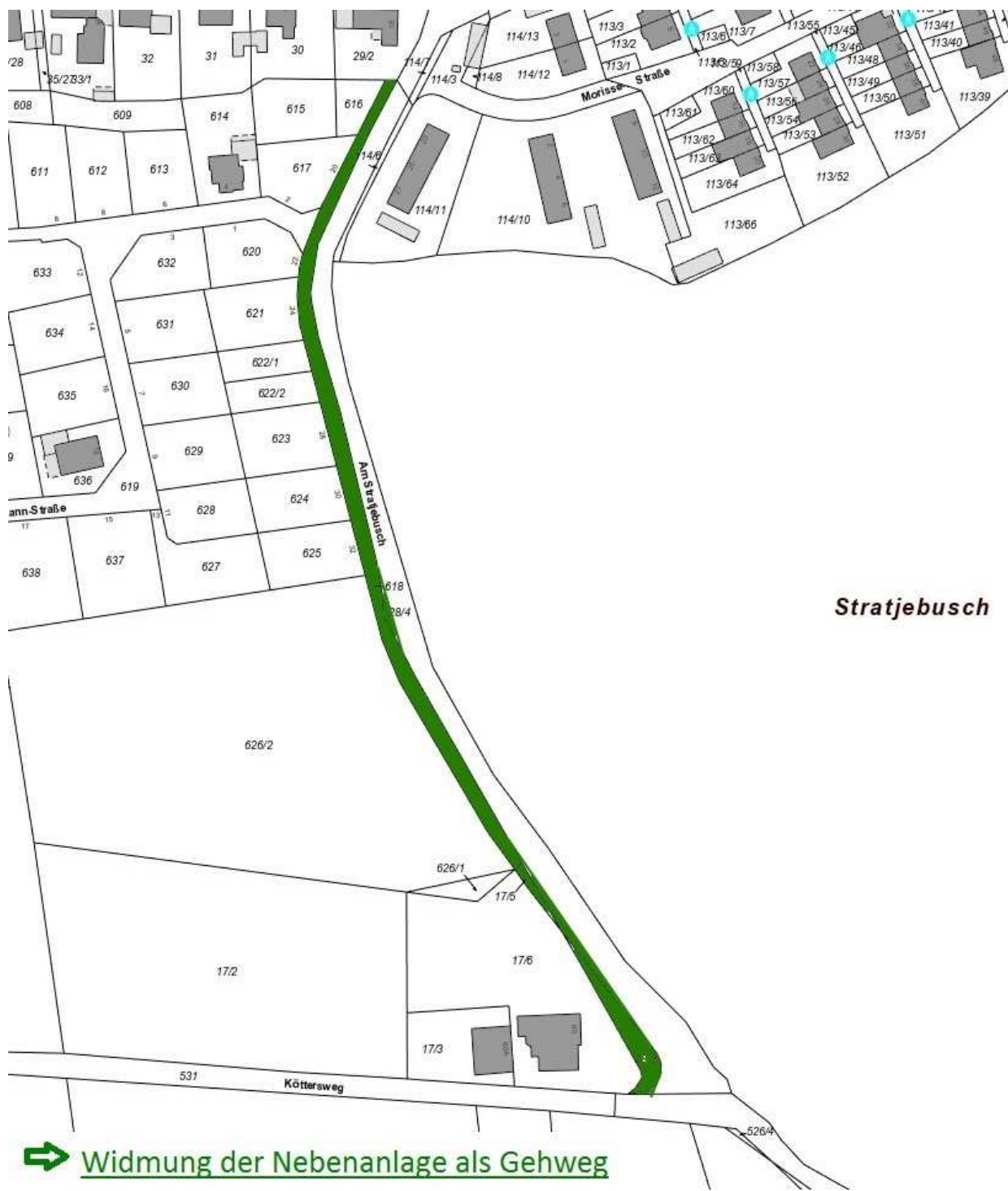
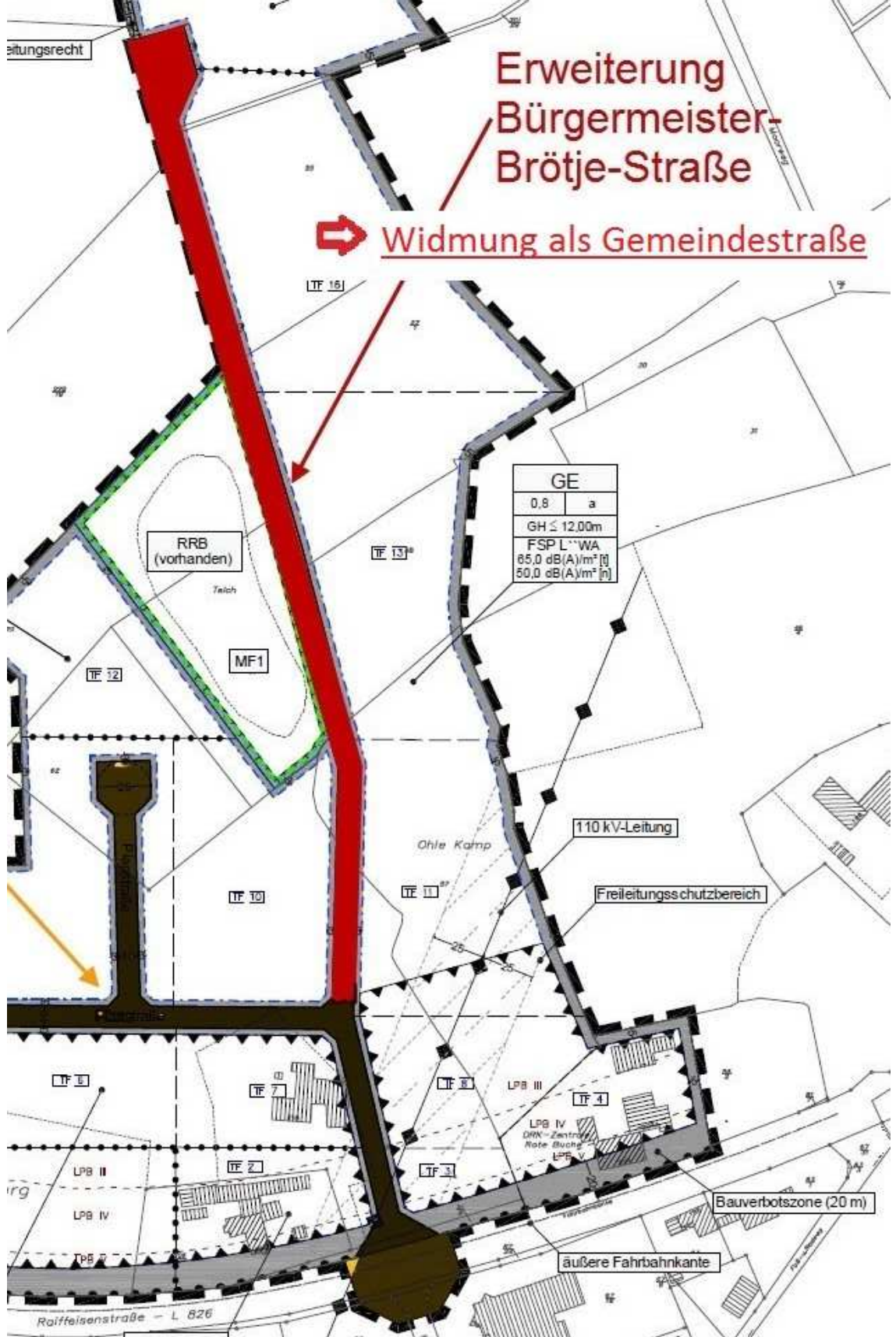




# Alte Schloßgärtnerei



# Am Stratjebusch

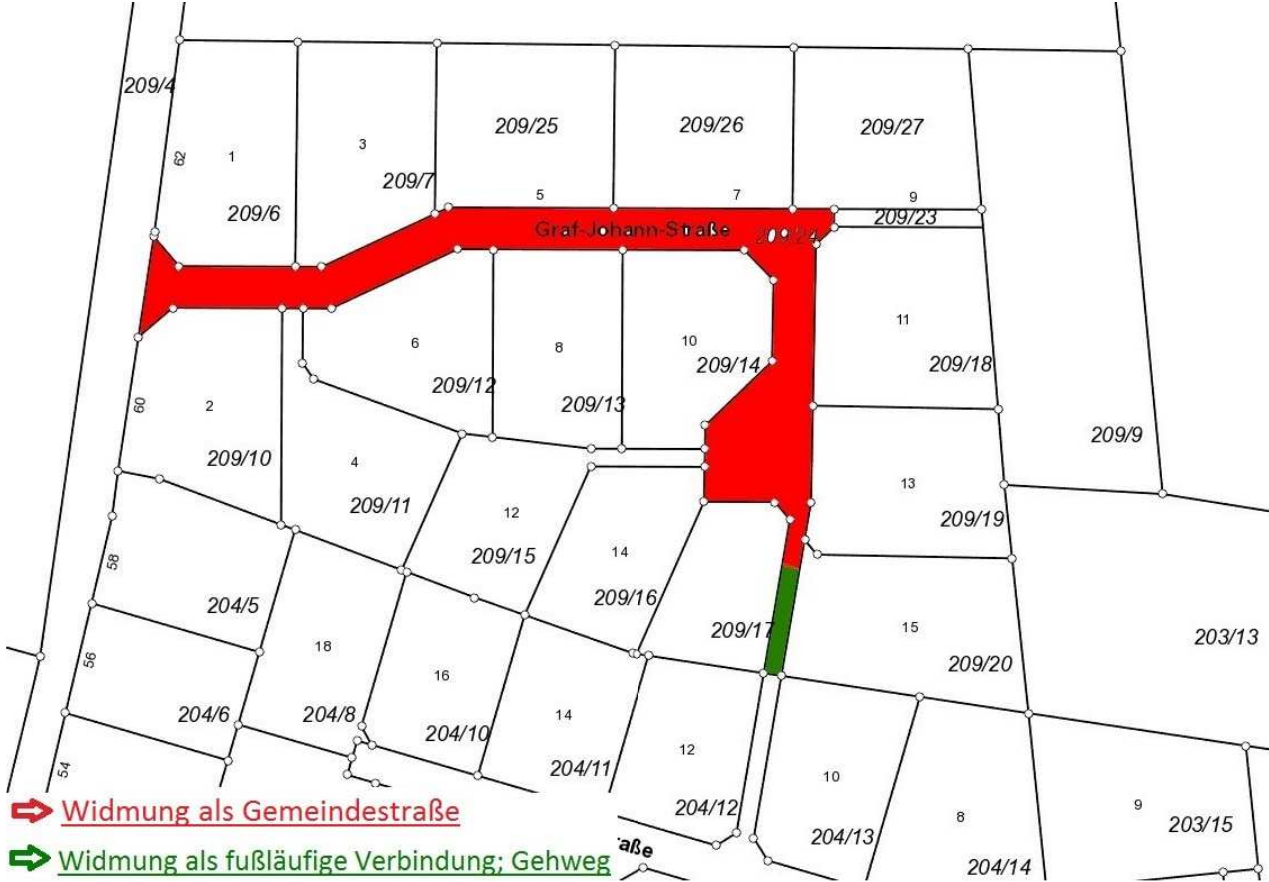


# Bürgermeister-Brötje-Straße

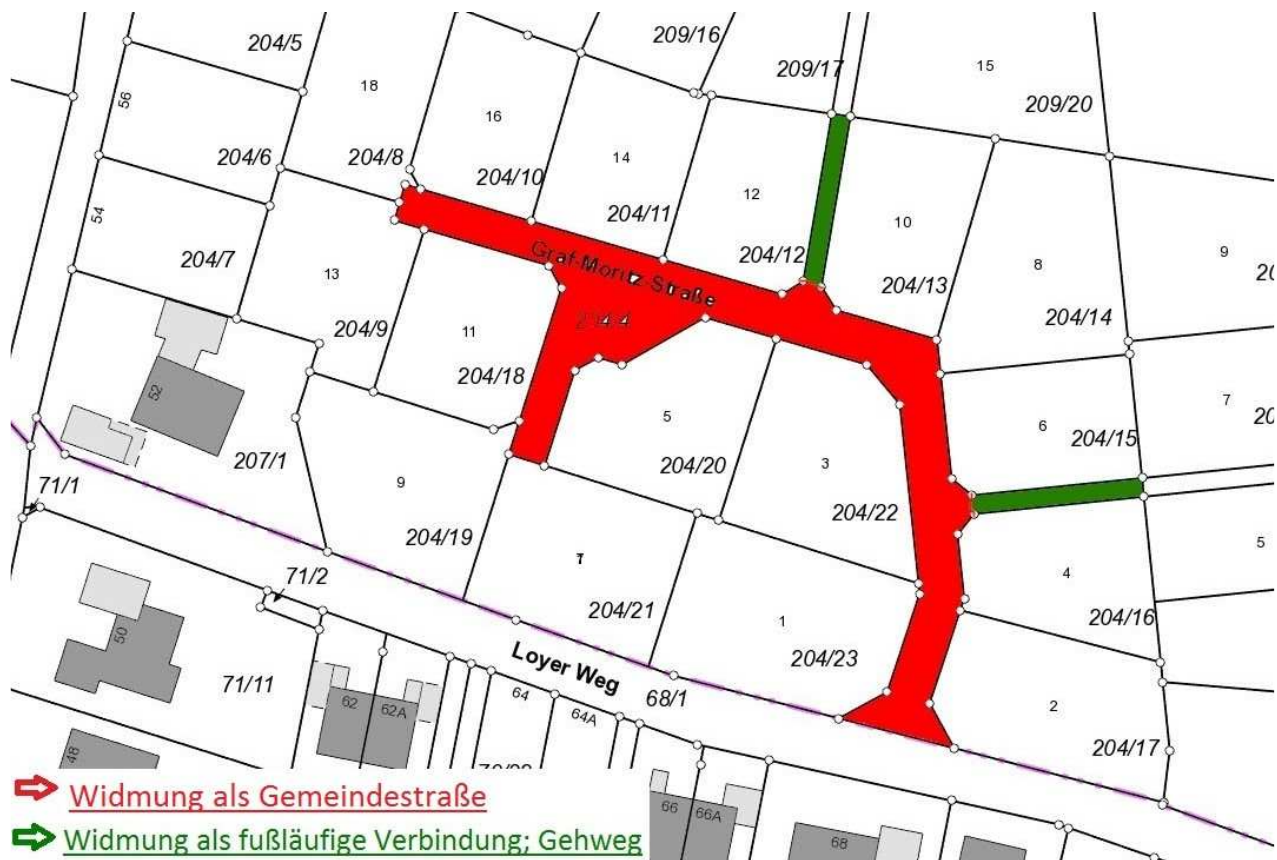
(Erweiterung)



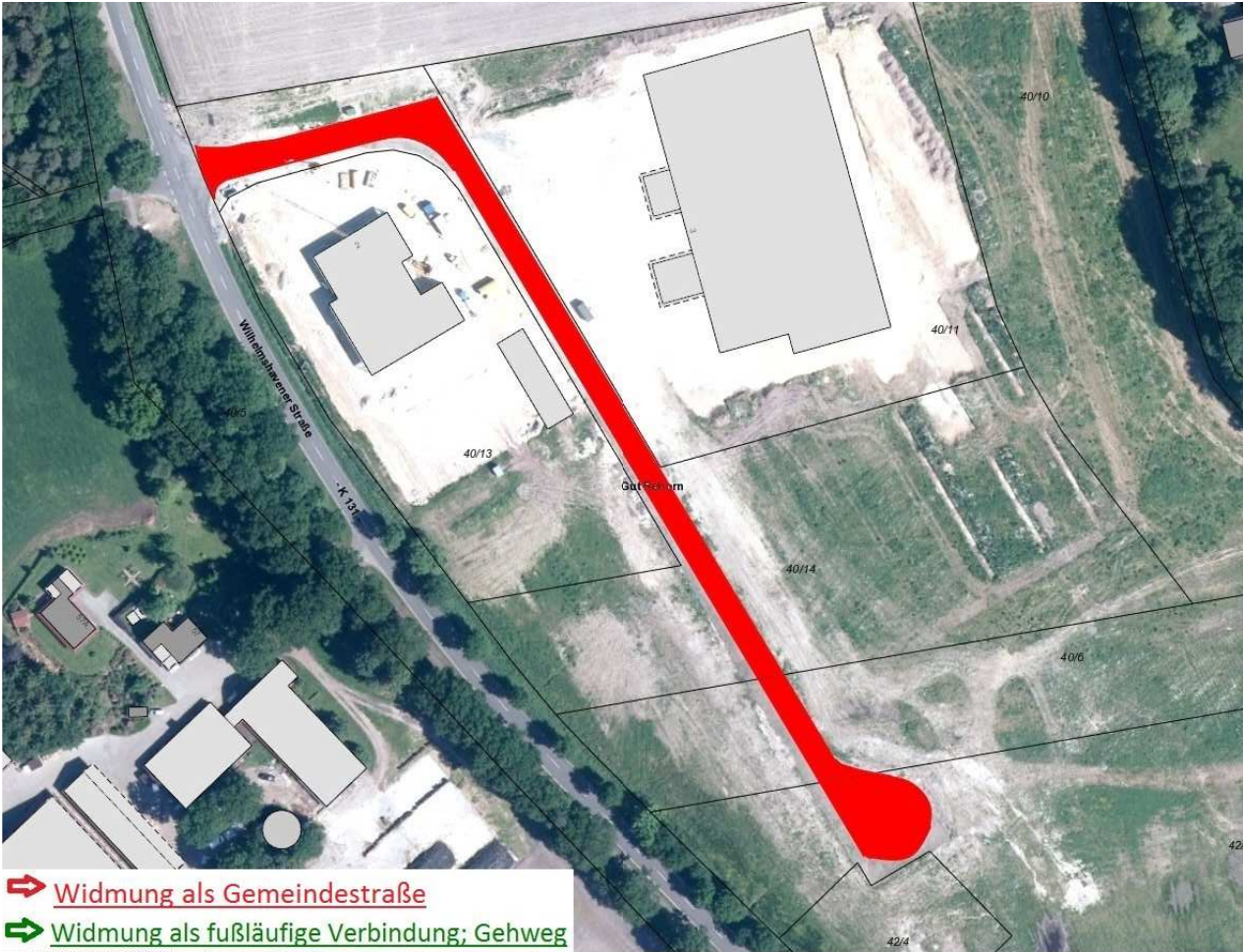
# Graf-Christoffer-Straße





# Graf-Johann-Straße

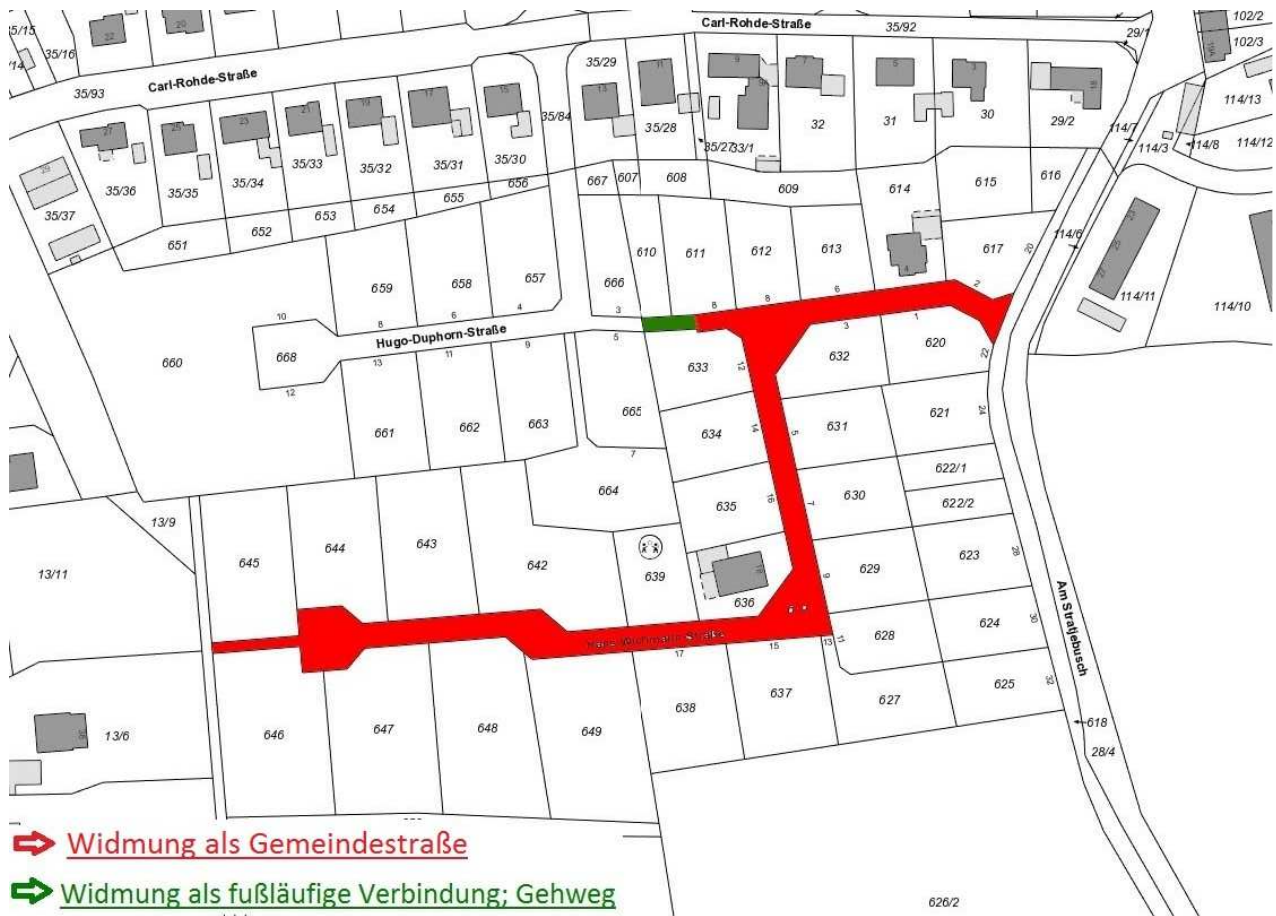


# Graf-Moritz-Straße



-  Widmung als Gemeindestraße
-  Widmung als fußläufige Verbindung; Gehweg

# Gut Rehorn



# Hans-Wichmann-Straße

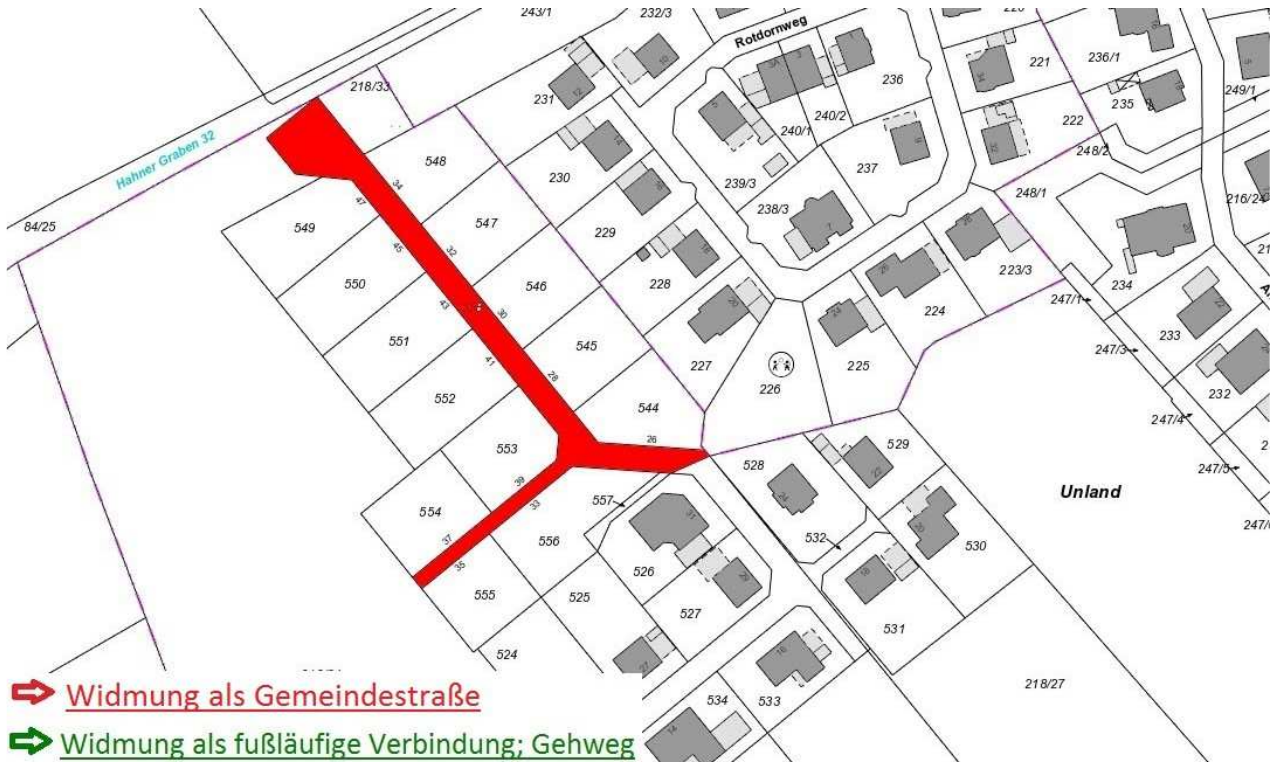




# Herzogin-Ida-Straße



# Hugo-Duphorn-Straße



# Ligusterweg (Erweiterung)